



# grow:brixton

Carl Turner Architects  
London



**grow:knowledge:** apprenticeships, training schemes and courses

**grow:food:** plant nurseries, growth of food for the cafe, inspiring people to grow their own

**grow:culture:** performance & gallery space, exhibitions from local schools and local artists

**grow:enterprise:** rental spaces for young start-up businesses and local businesses to expand

**grow:community:** meeting areas, event space, green space

together we will **grow:brixton**

## Our Concept



© 2014

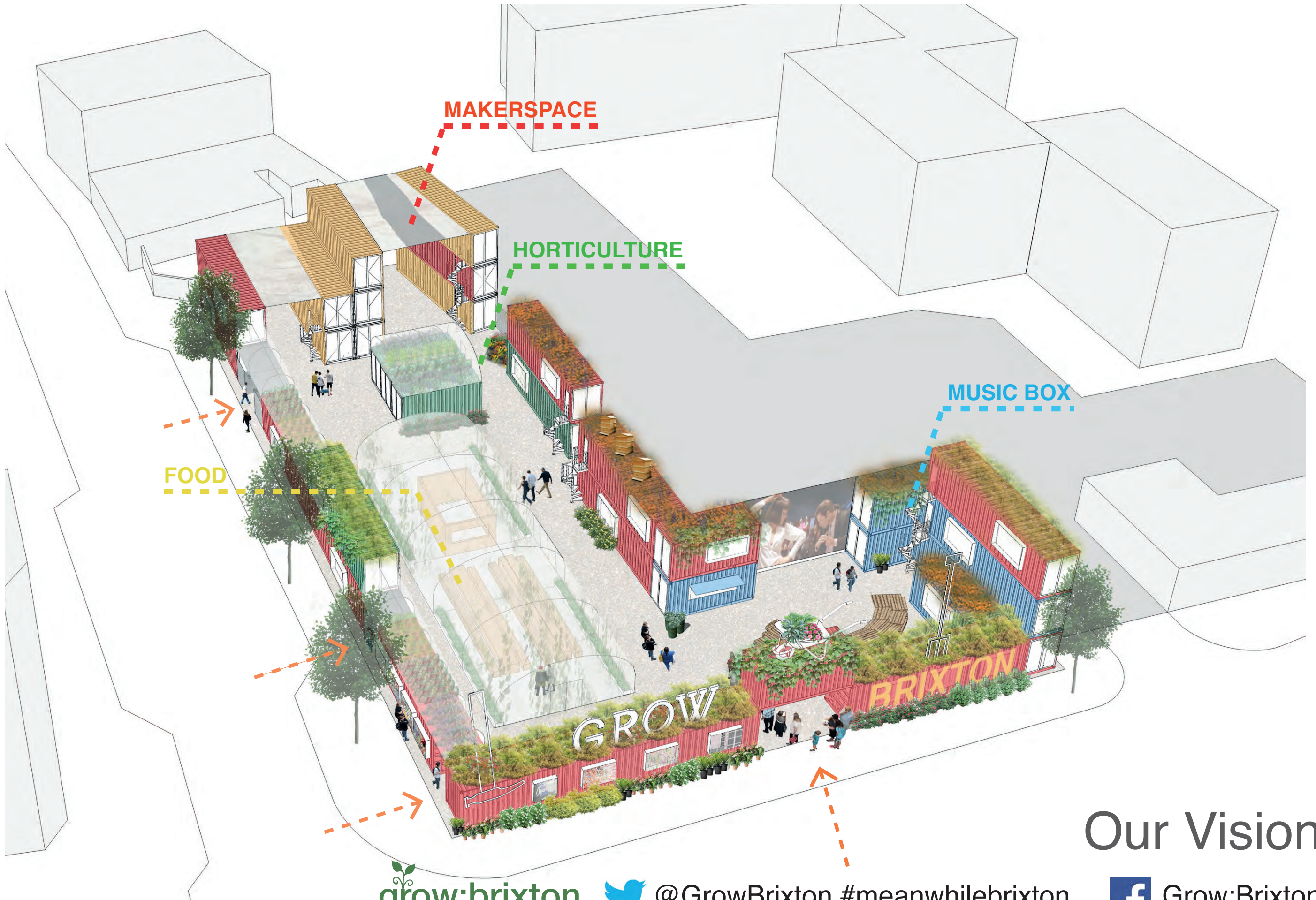


@GrowBrixton #meanwhilebrixton



Grow:Brixton





# Our Vision

grow:brixton



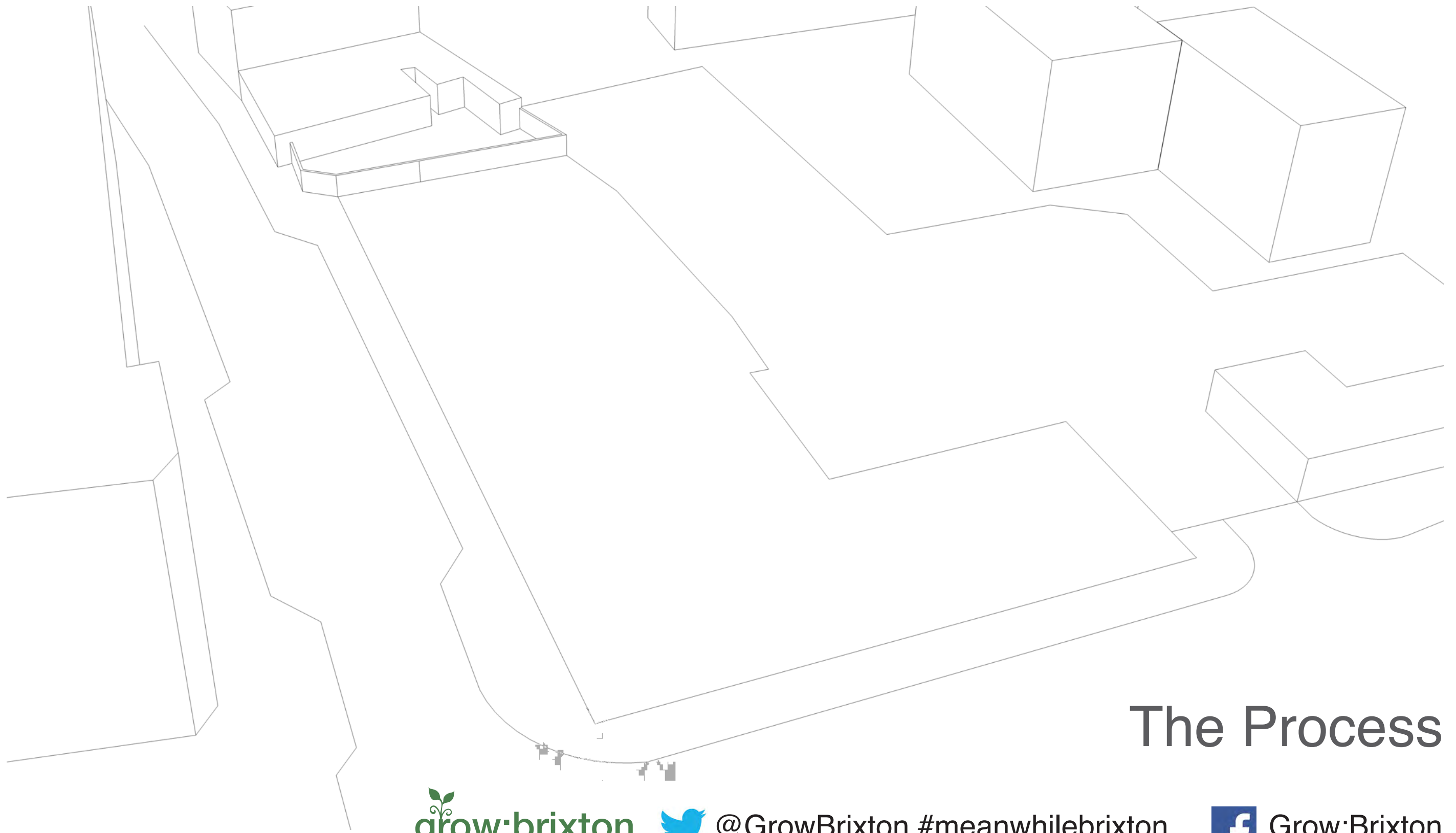
@GrowBrixton #meanwhilebrixton



Grow:Brixton

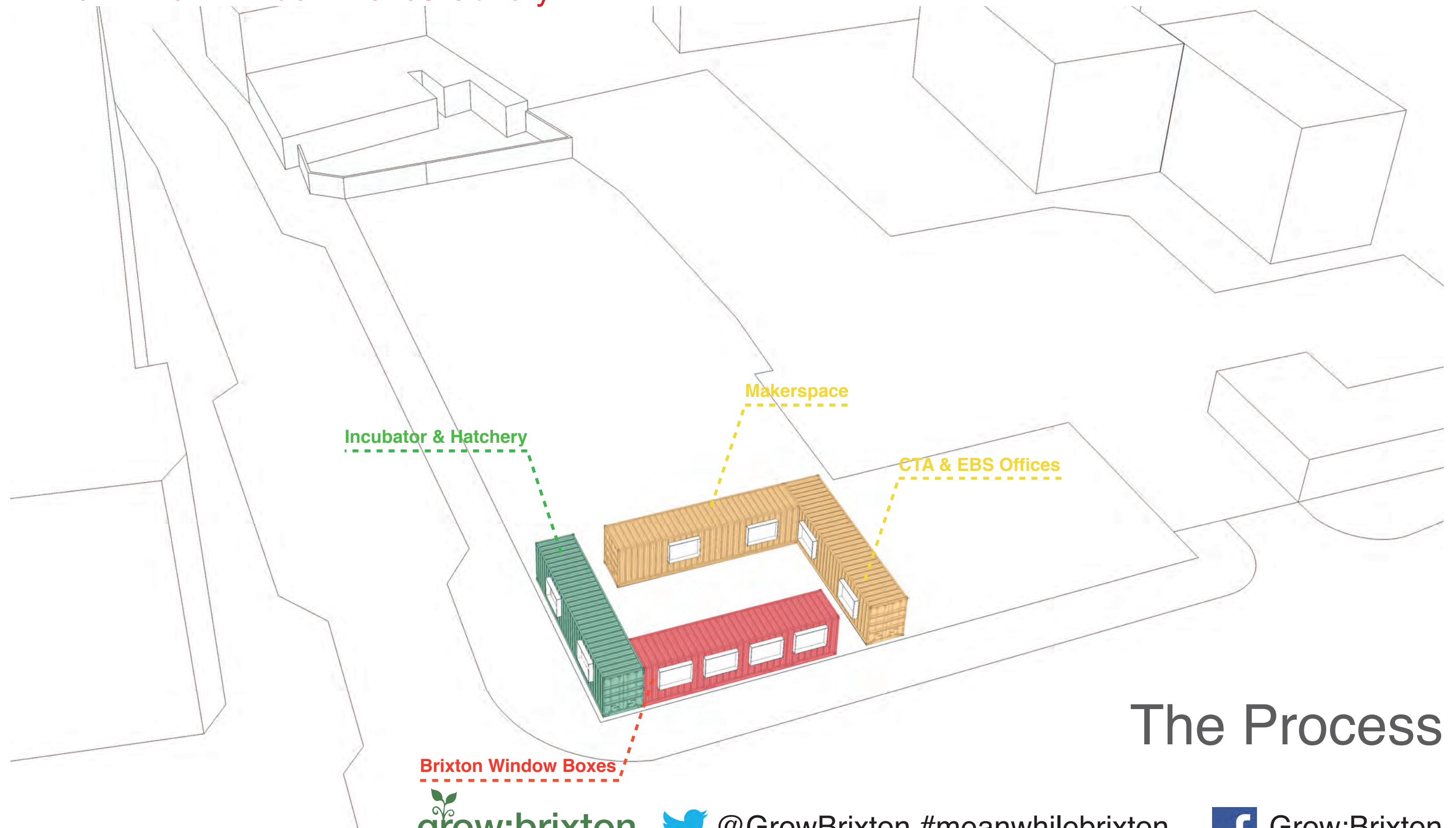
© 2014

Pope's Road Meanwhile Site as existing.



The Process

4 Shipping Containers form the start: **The Makerspace** workshop fits out the other 3 containers, CTA and EBS take up **office** residency to oversee the site development, start-up businesses rent desk space in the **Incubator & Hatchery**, and local schools, colleges and artists exhibit their work in the **Brixton Window Boxes Gallery**



## The Process

Brixton Window Boxes

grow:brixton



@GrowBrixton #meanwhilebrixton



Grow:Brixton

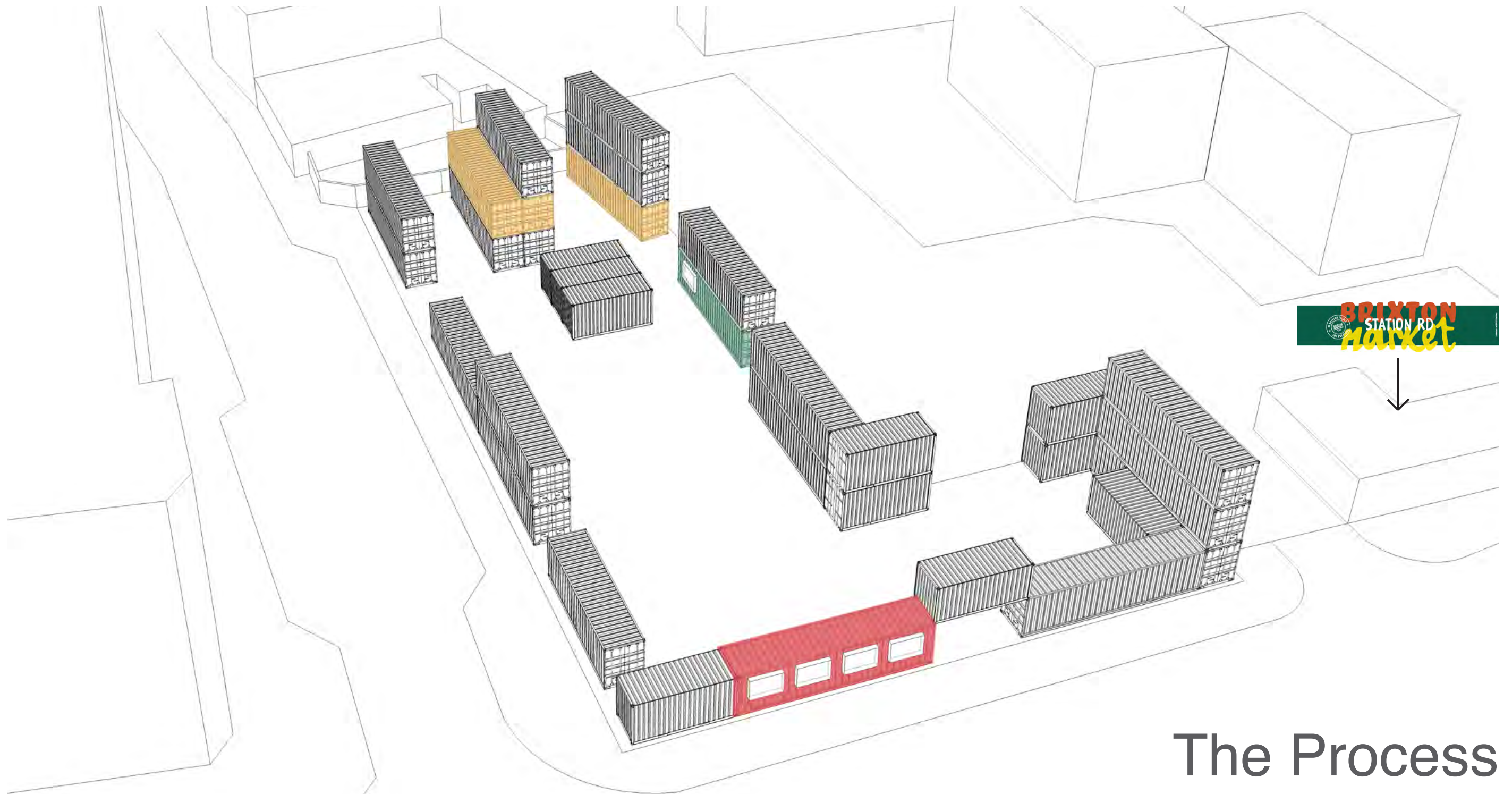
A mini-site is created with a temporary garden space, run by Edible Bus Stop and partners. We will refurbish the existing building on the site for the use of the Brixton Market Traders Federation BMTF. There will also be provision for them to use spaces within the site.



## The Process

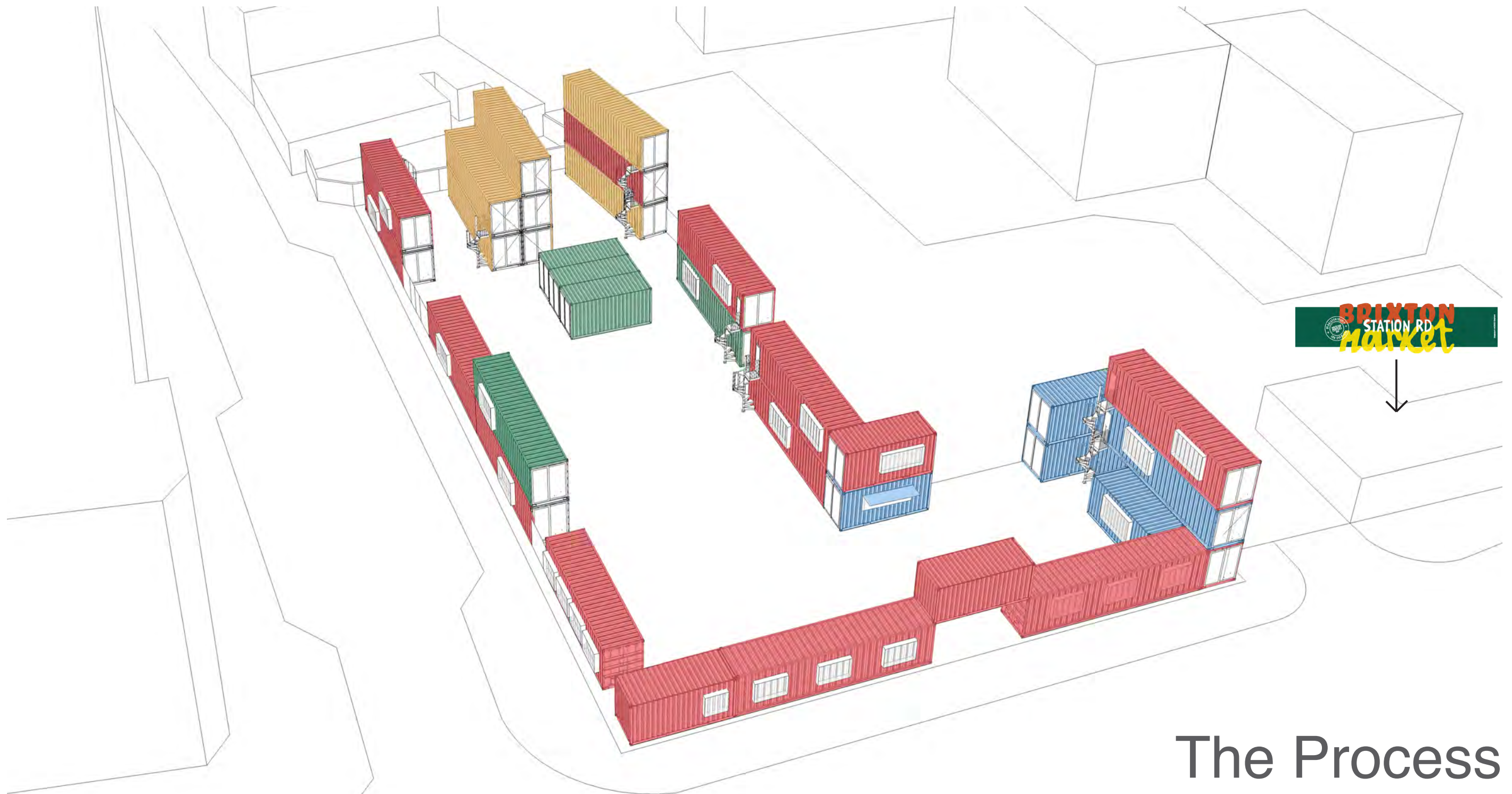


The 4 Shipping containers take their places within the scheme and are joined by other empty containers to be fitted out.



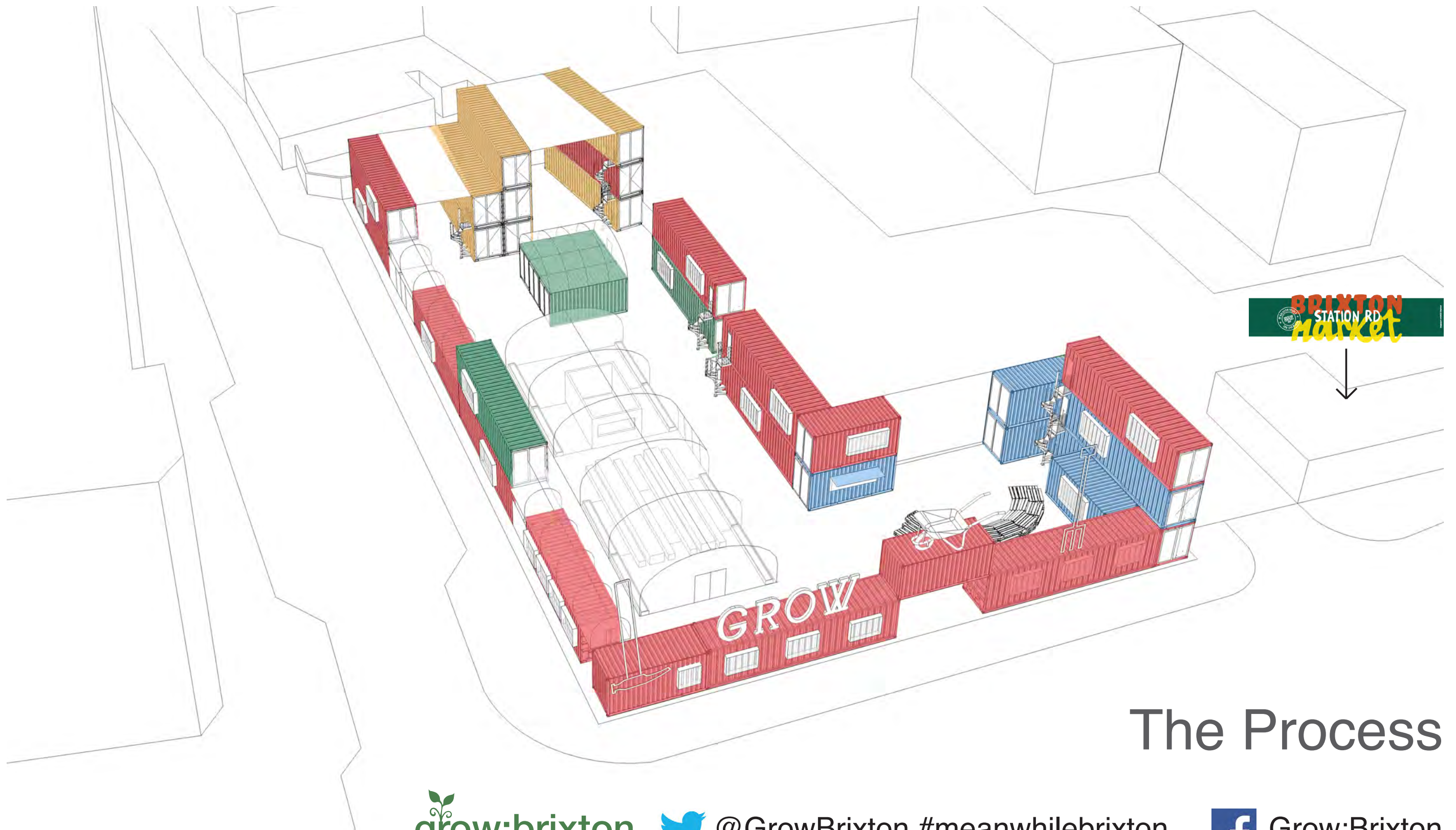
## The Process

All shipping containers are fitted out on site with teams of apprentices, led by Carl Turner Architects. Tenants of the 'Brixton Boxes' move in.



## The Process

Carl Turner Architects and Edible Bus Stop together with accredited apprentice providers lead apprentices and trainees to 'inhabit' the site with poly-tunnels, a performance area, an eating space, signage and planters.



## The Process

Plants flourish, businesses open and all areas are open for action. People are drawn to the site to learn new skills, eat locally grown food, watch performances, attend exhibitions, visit new shops and get involved with grow:brixton. A unique supportive environment is created for small businesses to work together and grow together.



## The Process



© 2014



@GrowBrixton #meanwhilebrixton



Grow:Brixton

# Carl Turner Architects project at Hackney City Farm



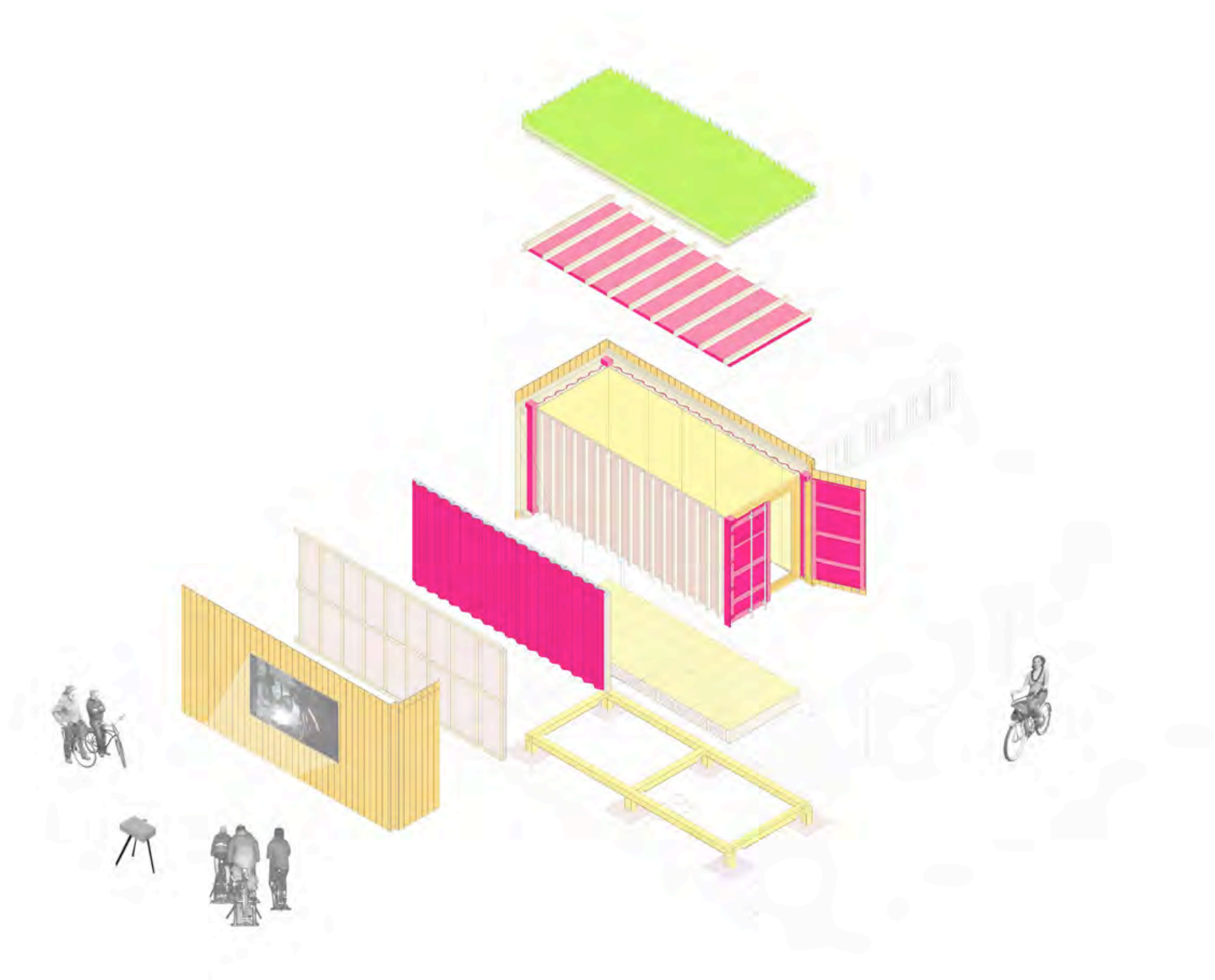
© 2014



@GrowBrixton #meanwhilebrixton



Grow:Brixton



















View from within the site, looking into the main poly-tunnel and towards the makerspace



View from the street towards the grow:brixton site

grow:brixton

© 2014



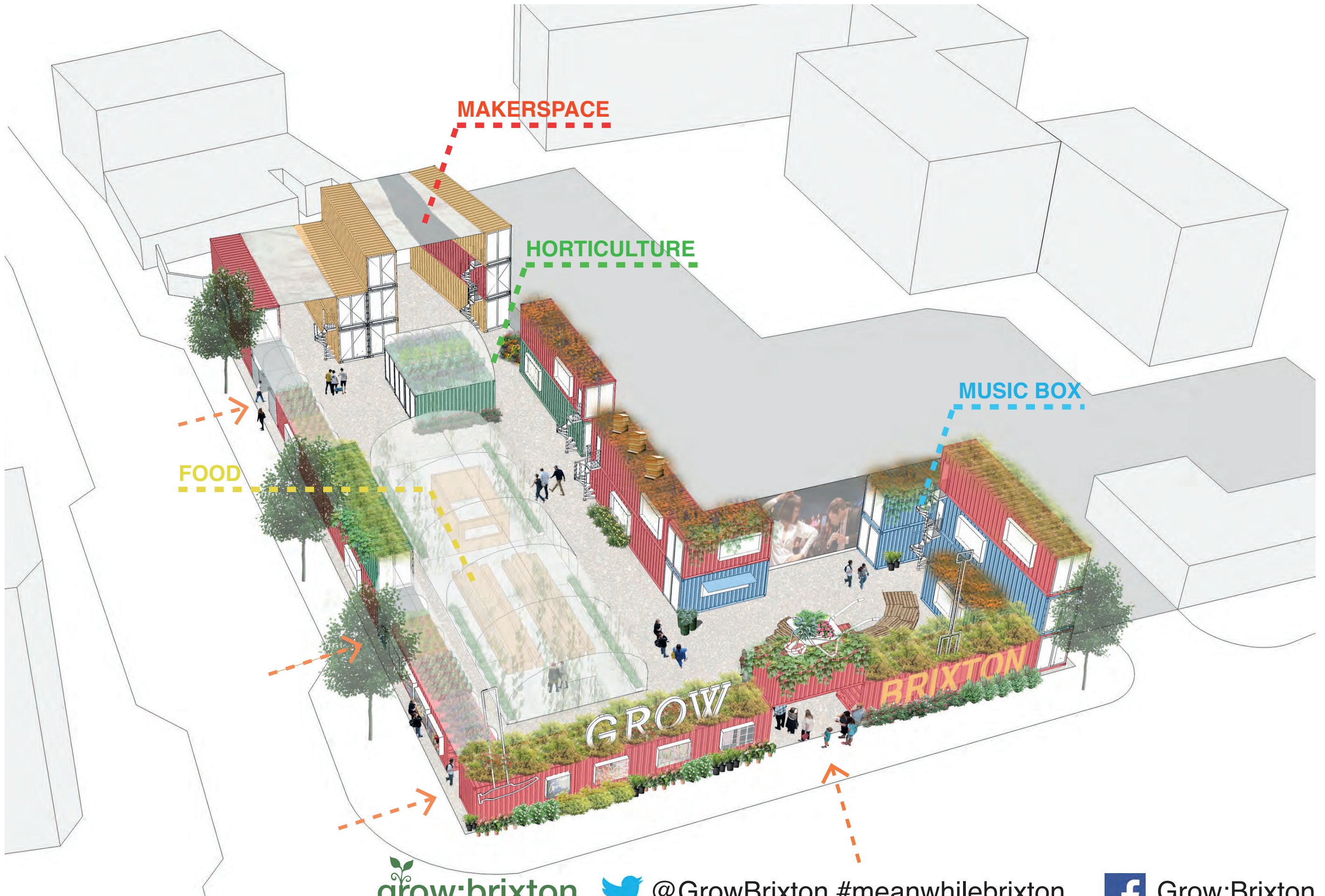
@GrowBrixton #meanwhilebrixton



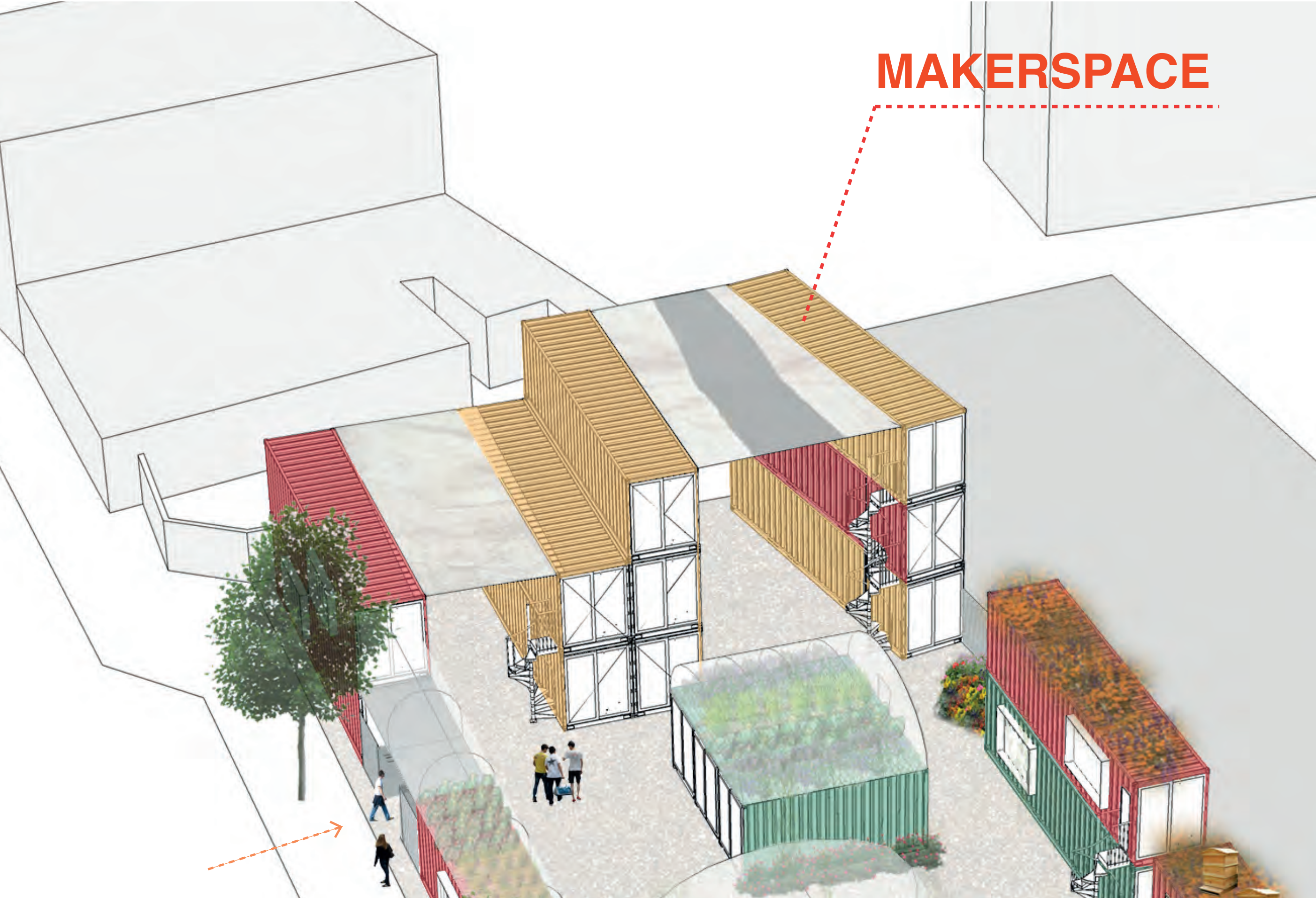
Grow:Brixton



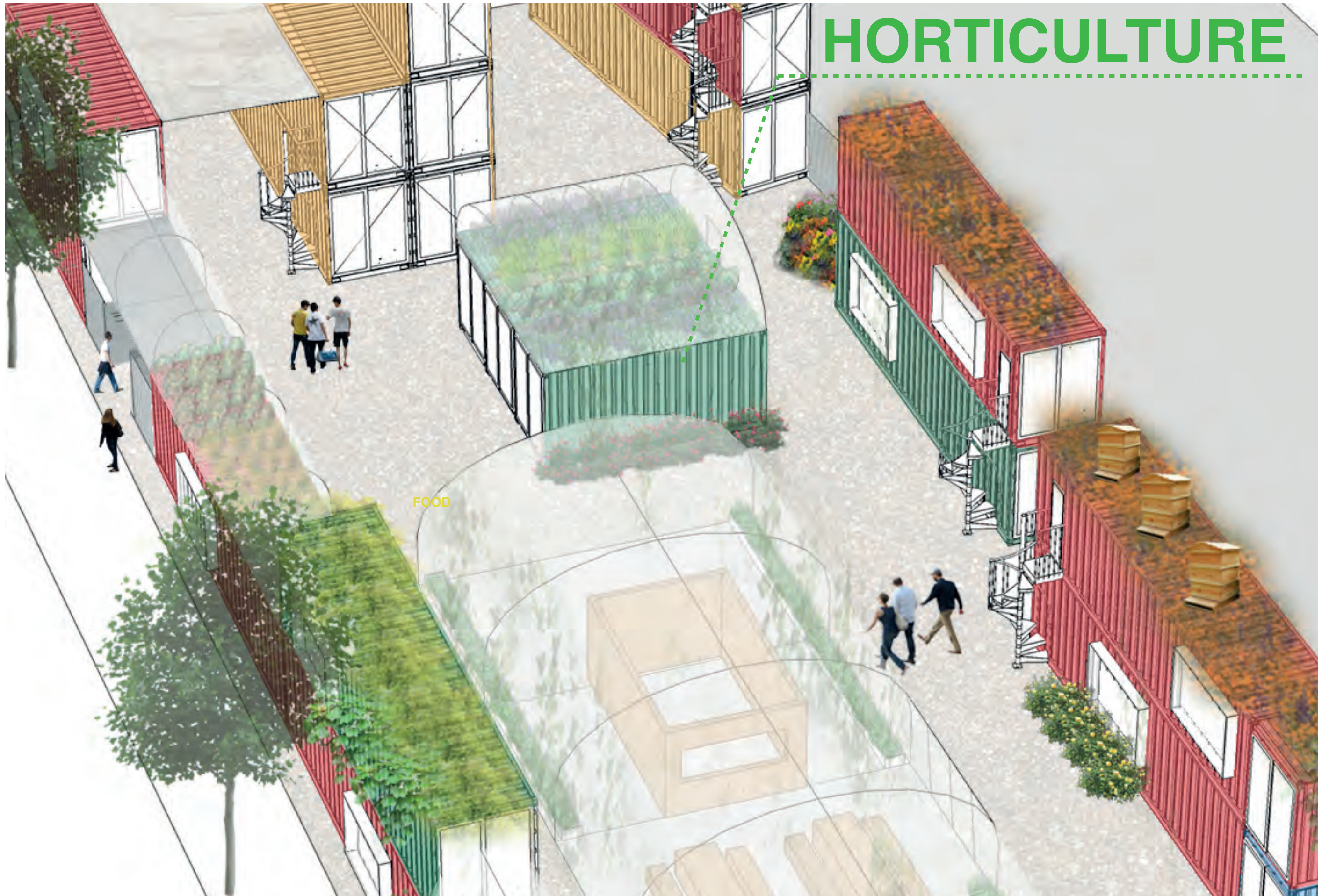
View from the street towards the Kiosks and Brixton Window Boxes



**MAKERSPACE**



# HORTICULTURE



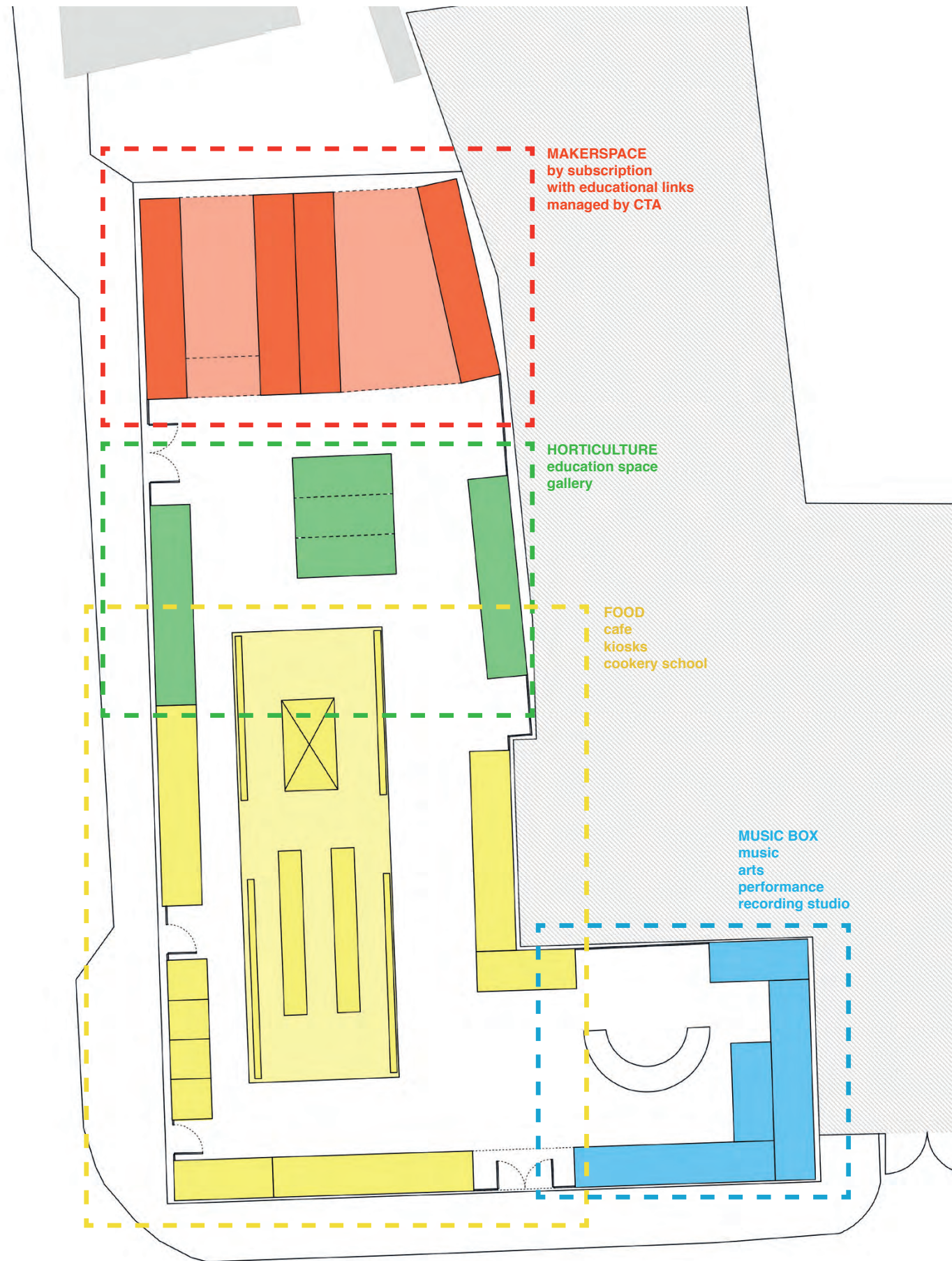
FOOD

FOOD



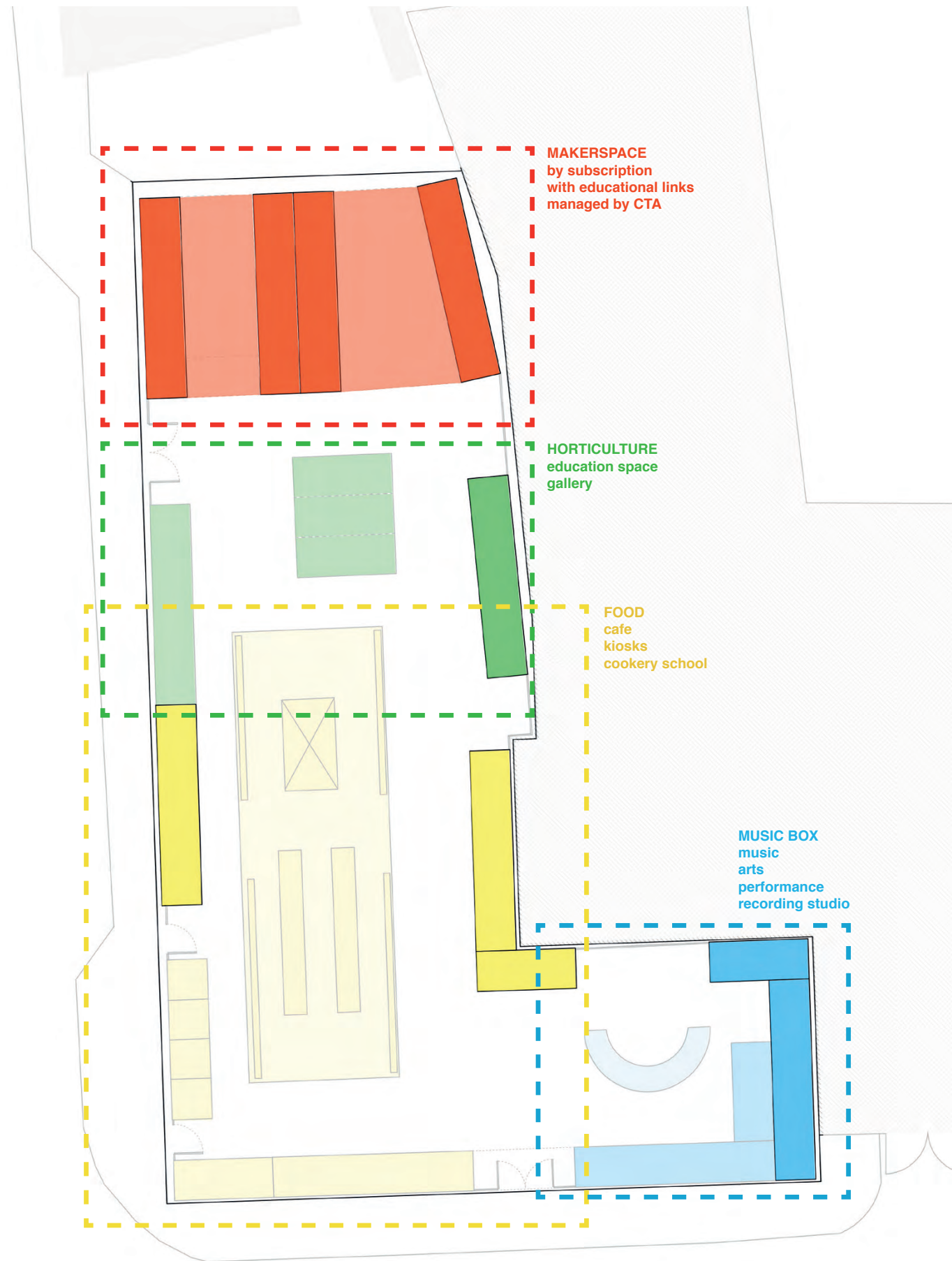
# MUSIC BOX





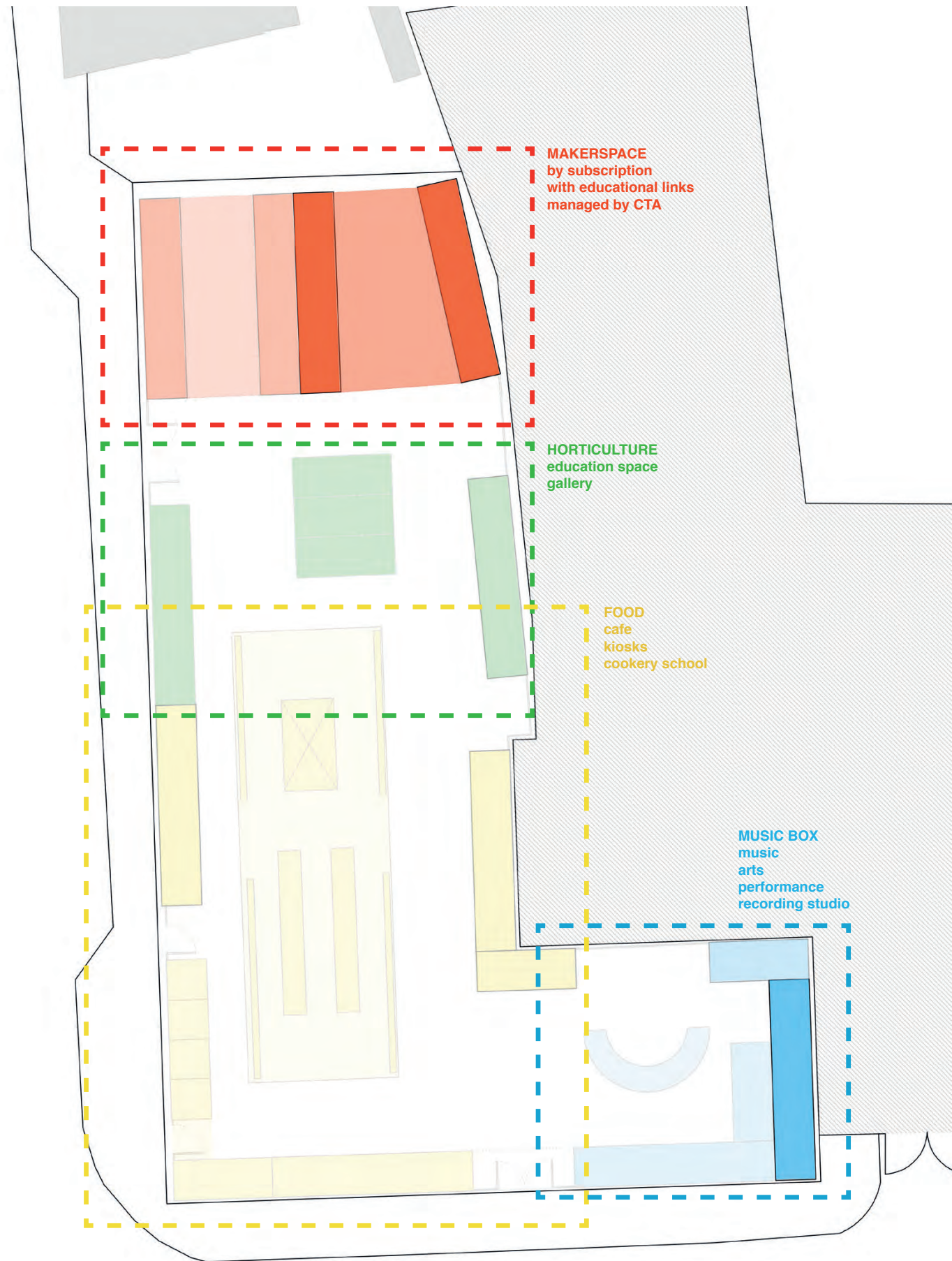
# Ground Floor

- Commercial
- Restaurant & Bar
- Hatchery & Incubator
- Gallery, event, community space
- Kiosk space
- Site Office
- Ancillary, storage, utility space



# First Floor

Studio / Workshop spaces mid-range rental costs



**MAKERSPACE**  
by subscription  
with educational links  
managed by CTA

**HORTICULTURE**  
education space  
gallery

**FOOD**  
cafe  
kiosks  
cookery school

**MUSIC BOX**  
music  
arts  
performance  
recording studio

# Second Floor

Studio / Workshop spaces low-range rental costs

## Hundreds of new job opportunities

Apprenticeship Schemes

Vocational Training

Workshops

Skill Sharing

In subjects such as:

**building**

**horticulture**

**emerging technologies**

**music**

**arts**

**performance**

**catering**



**Established artists, creatives, designers and businesses** involved with grow:brixton as part of Makerspace commissions or as residents in the studios will provide **mentoring** to upcoming **entrepreneurs**.

A variety of spaces are available for rental:

**Kiosks / mini studios**

**Hot Desks**

**20ft Containers**

**40ft Containers**



Our proposal compliments and celebrates local businesses, organisations and initiatives in Brixton and across the Borough.

We will provide opportunities throughout the site for developing and enriching existing entrepreneurs, while supporting and helping new enterprise.

## Income Streams – Preferences towards local people and businesses

### Studio Rentals

Food and Beverage concessions  
(complimenting, not competing with existing businesses)

**Ticketed events from £5 - £25**  
(discount available with Brixton Pound)



We are very experienced in partnering with corporate organizations for sponsorship of materials in kind – while retaining the projects integrity and not becoming logo city.

There is no public funding used in our proposal.

Working closely with local businesses and organizations such as Brixton Pound, we will place a strong emphasis on enhancing the local economy.

In programming the spaces on a monthly basis, we will ensure a fixed percentage will be allocated for local groups, schools, businesses and Council.

## Event Spaces

### Large multifunctional outdoor space

- Theatre
- Cinema
- Live Music
- Spoken Word
- Dance
- Live art and sculpture
- Interactive and Engaging workshops
- Inspiring talks



### Central classroom and workshop/event space

- Educational classes for local schools and institutes
- Workshop space for local organizations
- Business mentoring and talks
- Artist workshops
  
- Intimate musical/theatre/spoken word events



### Covered Public Space

There will be provision for a number of key events throughout the year to adopt the covered makerspace area for larger capacity events.

## Organisation Breakdown

### The Design Team:

Carl Turner Architects will act as lead designers and contractors to establish the physical elements of the proposal. Together with The Edible Bus Stop they will act as curators, designers and form part of the management team of the space. The planting will be implemented by The Edible Bus Stop, the cafe will be run by Canteen.

### Partner Organisations:

The partners will oversee the day to day running of the four zones across the site. They will take on apprentices and teach courses to help build, implement and maintain the scheme, in planting, fitting out the containers and running the cafe.

### Steering Group:

This will be made up of a consortium of local businesses, market traders and community groups with a vested interest in central Brixton.

### Youth Steering Group:

A voice for the younger members of the community to ensure there is a continued relationship with the young people of Lambeth, keeping the space fresh and evolving with their needs.

### Tenants of grow:brixton:

Future tenants will be a mix of innovators, designers, makers and creators in multi-disciplinary spheres, some of whom will become actively involved in the creation and maintenance of aspects of grow:brixton. A group of containers will be allocated for the use of the community known as the 'Hatchery' to incubate ideas, provide a 'classroom' and meeting place.

### Management Board:

The site will be a joint venture between CTA, EBS, our funding partners and Lambeth Council

### Open Book Accounting:

There will be profit share between partners

Substantial profit share with Lambeth Council

Profitability increased year on year from year 2.



# Precedents













# Carl Turner Architects













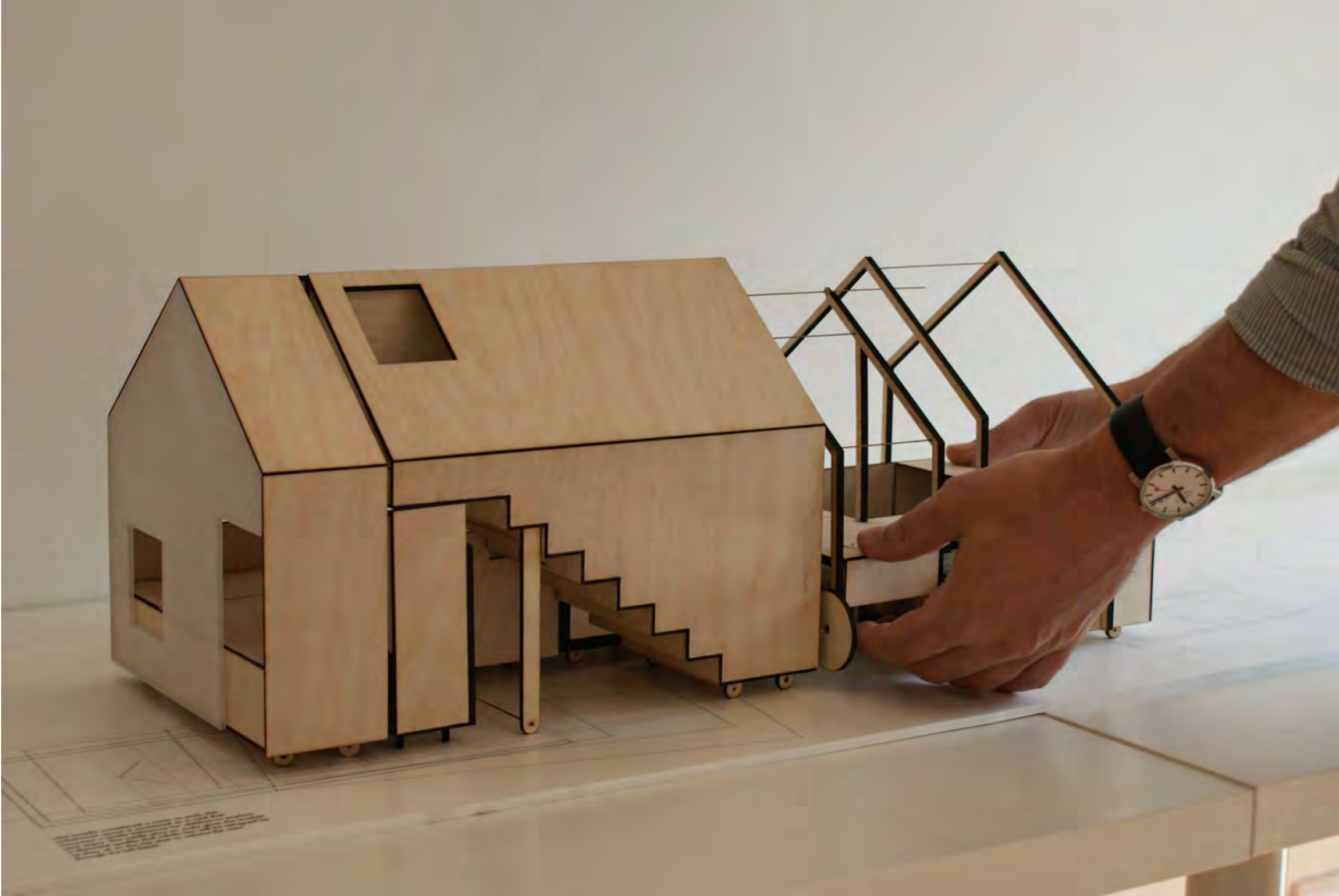
19.01.12

# AJ Small Projects

Presenting the 2012 shortlist for the awards: Part 1  
ON THE COVER Carl Turner Architects

£4.95 / THE ARCHITECTS' JOURNAL / THEAJ.CO.UK





# Making













# The Edible Bus Stop











































**Canteen**<http://canteenbristol.co.uk>

"We specialise in good things such as affordable home-cooked food, free live music and a vibrant fiendly place to meet and play. As a key tenant and collaborator, we'll bring grow:brixton all this and our experience in running a successful business encompassing all these elements, including our knowledge of licenses and requirements regarding security and waste management."

**Brixton Pound**<http://brixtonpound.org>

"The Brixton Pound has long championed local production as a way to solving many of our economic challenges, and grow:brixton offers a unique opportunity to showcase the potential of urban growing. The last few years have seen a boom in local production, everything from beer to cakes to hot sauces. This project gives them and new local producers a showcase venue, as well as an attractive, open and inspiring space in a part of Brixton short on greenery."

**Brixton Brewery**<http://brixtonbrewery.com>

"We welcome grow:brixton, a bid that aims to provide a diverse multifunctional space in the heart of Brixton with growing and sustainability at its core along with providing opportunities for local people and businesses."

**Hill Mead Primary**<http://www.hillmead.org>

"As the nearest school, Hill Mead is pleased to support the grow:brixton bid. We plan much of our learning around projects and partnerships and are very excited about the opportunity that this proposal presents within walking distance. In particular, growing space is limited at the school. We also relish the chance to show case some of the children's many achievements to their local community."

**Brixton Cornercopia**<http://brixtoncornercopia.co.uk>

"grow:brixton offers a fantastic opportunity to promote urban food growing and artizanal production. Like the rooftop gardens of the South Bank it would create a green haven amidst the concrete and a remarkable arts/performance space. It could grow a thousand new ideas, create new jobs whilst feeding plenty. This is the project that will be talked about, really enjoyed and never forgotten!"

**Incredible Edible Lambeth**<http://www.incredibleediblelambeth.org>

"Congratulations to grow:brixton on your vision to transform our everyday edible actions. We're delighted you recognise Incredible Edible Lambeth as offering strong roots and love the idea this is a place where our growers, cooks and eaters can come together to nurture our local food culture."

**Lambeth College**<http://www.lambethcollege.ac.uk>

'We work closely with employers to ensure that our learners have the skills and experience needed in the workplace. We are committed to providing the best experience we can to all our learners, with modern industry standard facilities and excellent support from experienced teachers. At Lambeth College you don't just get a valuable qualification - you also get the skills and confidence to help you get ahead in your career.'

**Lambeth Food Partnership**<http://lambethfood.org.uk>

"The Lambeth Food Partnership galvanises organisations and individuals to cultivate a healthier and more sustainable food culture. By working together we are greater than the sum of our parts"

**Tree Shephard**

<http://treeshepherd.org.uk>

"Your project idea looks very exciting and I'm sure there will be lots of opportunities to support the sort of people we're looking to help (those who are really struggling to find work etc) and I'd be delighted to work with you to help both our students and any other Lambeth residents who want to start a business or get more involved."

**Pop Up Foundation**

<http://www.pop-up-foundation.org>

"The Pop-Up-Foundation was established to create the conditions that enable sustainability projects to flourish. We can bring two specific things to grow:brixton - first our own ethically sourced and traded coffee, from our own farming network in Uganda which can generate revenue for the initiative, second our extensive technical knowledge of how to grow sustainable communities."

**Streetscape**

<http://www.streetscape.org.uk>

"As an award winning social enterprise based in Lambeth we are delighted to be involved with the grow:brixton bid and it's fantastic partners. It's an exciting project that will make a huge difference to the people and communities in and around Brixton"

**Project Dirt**

<http://www.projectdirt.com>

"We know that communities and their projects can change the world. We're use social media for a purpose: to connect, promote and resource passionate people and their projects. We are delighted to support the grow:brixton bid. We've worked with many community-based projects using 'Meanwhile Space' in creative ways, and the bid put forward by grow:brixton is one of the most exciting ideas we've seen so far. What's more, knowing the team behind the bid, we are confident that these ambitious ideas will be delivered beyond expectations."

**Metal**

<http://www.metalculture.com>

"Creativity, imagination, sustainability and grass roots action - the grow:brixton proposal has all of these ingredients and promises to create a thriving shared community space in the heart of Brixton. Metal are thrilled to be invited to contribute to the thinking and creation of such a forward thinking, exciting space that has the potential to demonstrate what the future of communities could and should be."

**Art 4 Space**

<http://www.art4space.co.uk>

"The grow:brixton concept is just brilliant and we love the idea. As a potential collaborator, Art4Space fully supports the project. We can build on the history we already have and run accredited training courses."

**Bad Boys' Bakery**

<http://www.badboysbakery.org>

Bad Boys' Bakery is a social enterprise inside HM Prison Brixton that helps people with convictions to improve their skills and reintegrate them into society and employment on release. We believe that everyone deserves a second chance. The hard work doesn't stop in the Bakery, Working Links engages with employers, supporting them to differentiate themselves through recruiting from disadvantaged groups.

**From Somewhere**

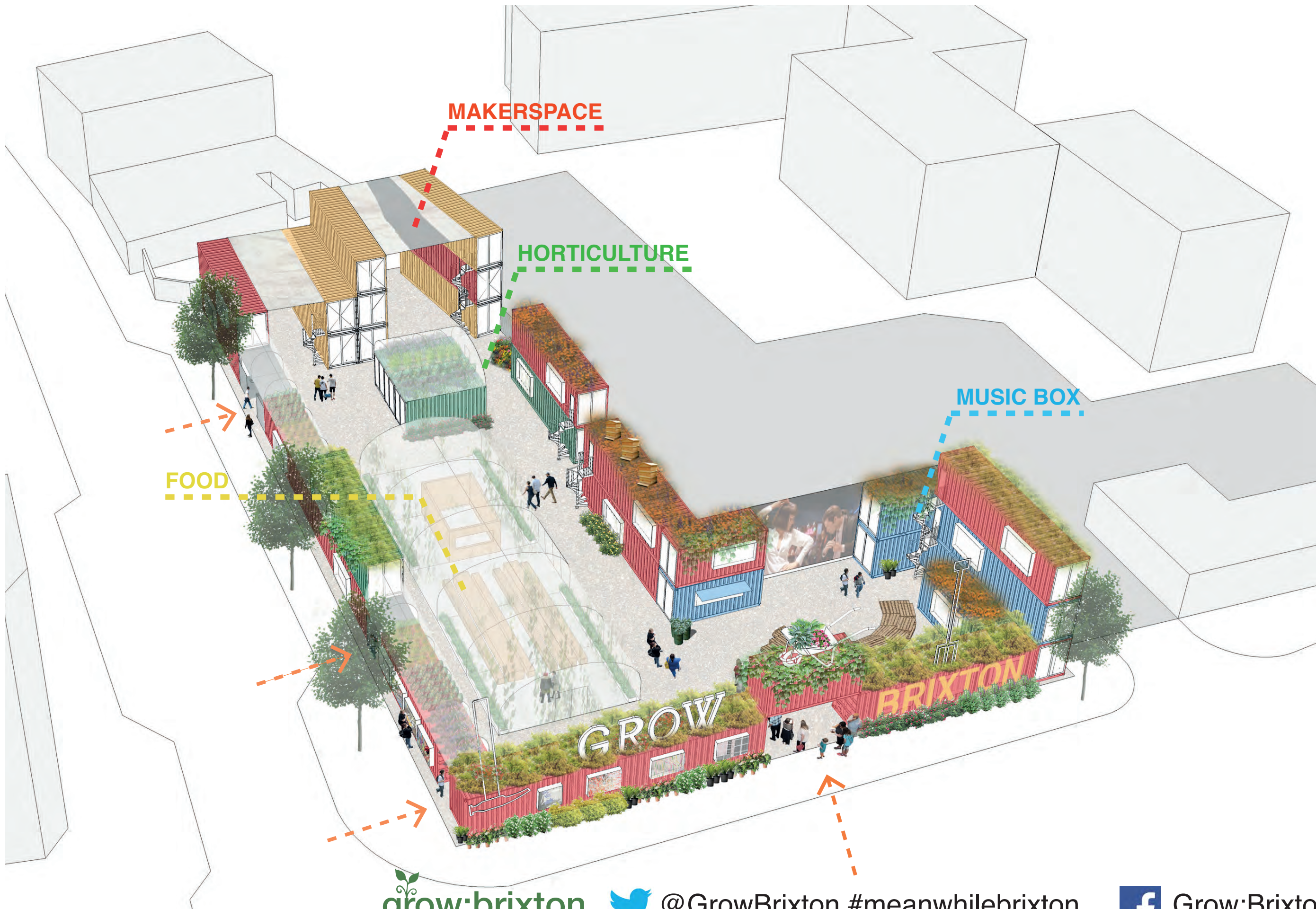
<http://fromsomewhere.co.uk>

"At From Somewhere, we cant wait to become involved with the grow:brixton project. Upcycling fashion is ideal for the community, as it can involve people of all ages to rediscover the unwanted and transform it into something new. We see great opportunities for a shared vision and many ways to engage in some fun, educational, innovative fashion activities."

**Fairtunes**

<http://fairtunes.org>

"Fairtunes sets up music studios and radio facilities that are accessible to impoverished communities in developing countries and in the UK. We see potential with the grow:brixton bid in ways we can work with them to enable local talent realise their dreams."



grow:brixton



@GrowBrixton #meanwhilebrixton

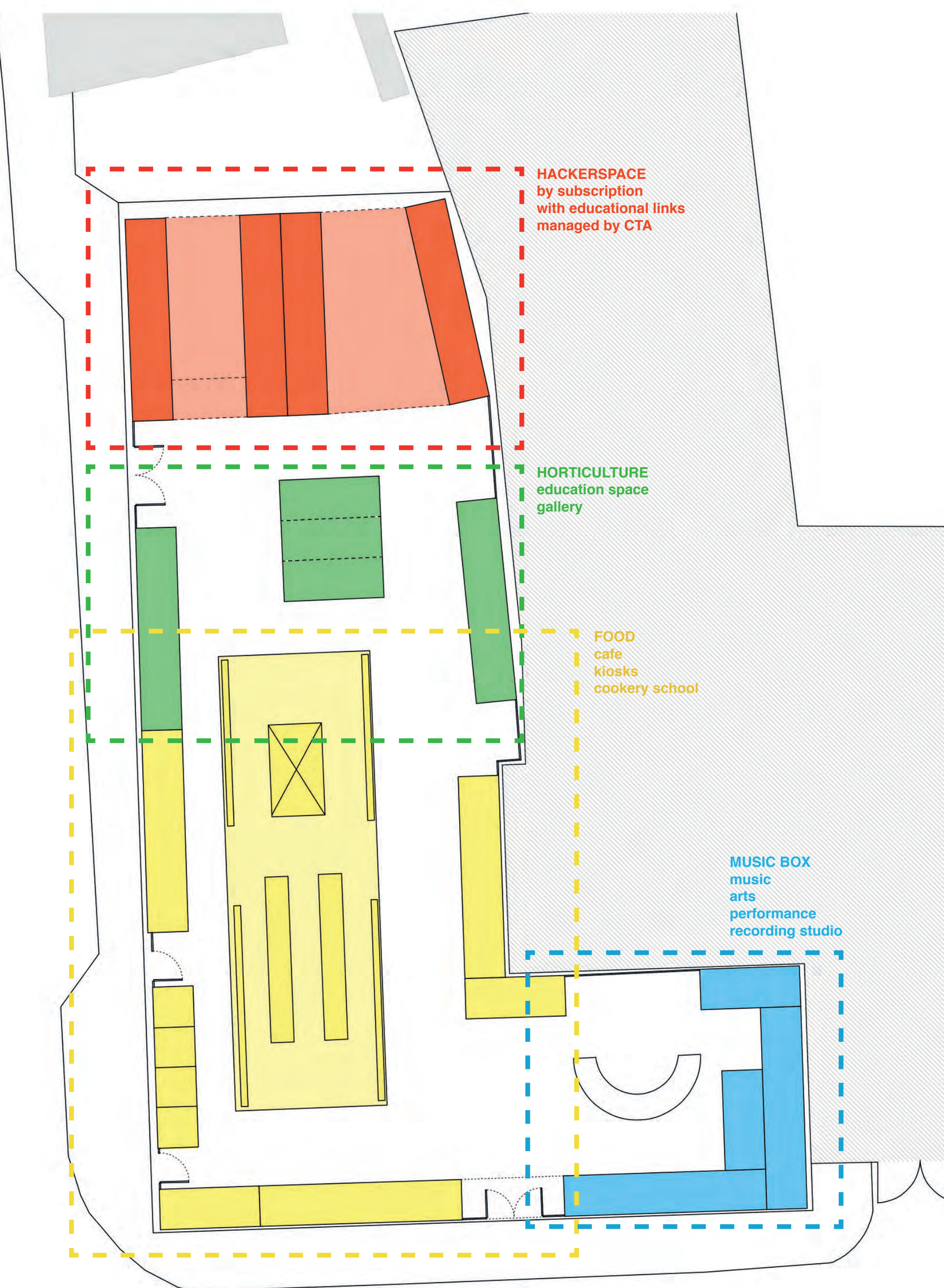


Grow:Brixton

© 2014







**HACKERSPACE**  
by subscription  
with educational links  
managed by CTA

**HORTICULTURE**  
education space  
gallery

**FOOD**  
cafe  
kiosks  
cookery school

**MUSIC BOX**  
music  
arts  
performance  
recording studio



# grow:brixton



@GrowBrixton



Grow:Brixton

Carl Turner Architects  
London



The Canteen

INCREDIBLE  
EDIBLE  
LAMBETH

FROM  
SOMEWHERE



Brixton  
*cornercopia*



B&E

Metal

**BRIXTON**  
L D N B R E W E R Y S W 9



**PROJECTDIRT**  
CONNECTING COMMUNITIES FOR GOOD

